



NATA LIGHTING CO.,LTD.
www.nata.cn
Email:info@nata.com
Tel:+86-750-3770000 Fax:+86-750-3771111
Address:380JinOu Road,GaoXin Zone,Jiang Men City,Guangdong,China

NT

Client:

LumCAT: 1-1495-L

Luminaire: 92.70.427.00

Report No: 2024923-B002

Ballast type: AC

Test No: 2024924-C002

Voltage(V): 36.200

LampCAT: CITIZEN CLU028 LES9.8

Current(A): 0.360

Lamp flux(lm): 1718.0

Power (W): 13.032

Number of Lamps: 1

PF: 0.000

Length(mm): 0

Width(mm): 0

Phm Type: C

Height(mm): 0

Photometric Results

Lumens(lm): 1328.08, Efficiency(%): 77.30% , Luminous Efficacy(lm/W): 101.91

Central intensity(cd): 2407.674, Maximum intensity(cd): 2407.674

Angle of maximum intensity: C=0.0 γ =0.0

Beam Angle(50%Imax): [C0/180]Total=43.8

[C90/270]Total=43.8

Field angle(10%Imax): [C0/180]Total=67.4

[C90/270]Total=67.4

Maximum s/h(1/2): C0_180=0.70 C90_270=0.70

Maximum s/h(1/4): C0_180=0.70 C90_270=0.70

Up flux rate of lamp(%): 0.00%

Down flux rate of lamp(%): 77.30%

Up flux rate of LUM(%): - -

Down flux rate of LUM(%): 100.00%

CIE Type : Direct lighting

Output flux ratio in π solid angle : 97.693%

Equipment: GMS1980
Temperature(°C): 25.0

Date: 2024/9/24
Humidity(%): 60.0%

Operator: NT07
Distance(m): 7.65

$\gamma(^{\circ})$	Average I(cd)	Zonal F(lm)	Sum F(lm)	Eff Flux(%)	Eff Sum(%)
0.0	2407.674	0.000	0	0.00%	0.00%
1.0	2405.772	2.303	2.303	0.13%	0.17%
2.0	2398.530	6.896	9.199	0.40%	0.69%
3.0	2386.533	11.444	20.643	0.67%	1.55%
4.0	2367.806	15.914	36.557	0.93%	2.75%
5.0	2343.665	20.269	56.826	1.18%	4.28%
6.0	2314.550	24.480	81.306	1.42%	6.12%
7.0	2278.925	28.512	109.818	1.66%	8.27%
8.0	2237.886	32.326	142.144	1.88%	10.70%
9.0	2194.360	35.921	178.065	2.09%	13.41%
10.0	2140.519	39.229	217.294	2.28%	16.36%
11.0	2082.362	42.195	259.489	2.46%	19.54%
12.0	2018.280	44.826	304.315	2.61%	22.91%
13.0	1953.247	47.132	351.447	2.74%	26.46%
14.0	1879.582	49.060	400.507	2.86%	30.16%
15.0	1806.209	50.600	451.107	2.95%	33.97%
16.0	1729.618	51.810	502.917	3.02%	37.87%
17.0	1648.784	52.611	555.527	3.06%	41.83%
18.0	1564.877	52.986	608.514	3.08%	45.82%
19.0	1472.704	52.848	661.361	3.08%	49.80%
20.0	1357.042	51.792	713.154	3.01%	53.70%
21.0	1274.701	50.535	763.688	2.94%	57.50%
22.0	1195.681	49.643	813.332	2.89%	61.24%
23.0	1117.553	48.538	861.87	2.83%	64.90%
24.0	1033.229	47.024	908.893	2.74%	68.44%
25.0	948.116	45.051	953.945	2.62%	71.83%
26.0	860.632	42.696	996.641	2.49%	75.04%
27.0	771.861	39.939	1036.58	2.32%	78.05%
28.0	678.356	36.716	1073.296	2.14%	80.82%
29.0	592.979	33.262	1106.558	1.94%	83.32%
30.0	499.475	29.496	1136.054	1.72%	85.54%
31.0	415.729	25.469	1161.523	1.48%	87.46%
32.0	334.990	21.507	1183.03	1.25%	89.08%
33.0	272.064	17.884	1200.914	1.04%	90.42%
34.0	227.316	15.113	1216.027	0.88%	91.56%
35.0	175.151	12.499	1228.526	0.73%	92.50%
36.0	108.457	9.030	1237.556	0.53%	93.18%
37.0	83.029	6.245	1243.801	0.36%	93.65%

$\gamma(^{\circ})$	Average I(cd)	Zonal F(lm)	Sum F(lm)	Eff Flux(%)	Eff Sum(%)
38.0	66.511	4.991	1248.793	0.29%	94.03%
39.0	56.430	4.196	1252.989	0.24%	94.35%
40.0	48.925	3.674	1256.663	0.21%	94.62%
41.0	43.073	3.276	1259.939	0.19%	94.87%
42.0	39.056	2.984	1262.923	0.17%	95.09%
43.0	35.574	2.765	1265.688	0.16%	95.30%
44.0	32.707	2.577	1268.265	0.15%	95.50%
45.0	30.366	2.424	1270.689	0.14%	95.68%
46.0	28.471	2.301	1272.99	0.13%	95.85%
47.0	26.620	2.191	1275.181	0.13%	96.02%
48.0	25.172	2.094	1277.275	0.12%	96.17%
49.0	23.753	2.009	1279.284	0.12%	96.33%
50.0	22.524	1.929	1281.213	0.11%	96.47%
51.0	21.441	1.860	1283.073	0.11%	96.61%
52.0	20.439	1.797	1284.87	0.10%	96.75%
53.0	19.532	1.739	1286.609	0.10%	96.88%
54.0	18.691	1.685	1288.294	0.10%	97.00%
55.0	17.959	1.636	1289.93	0.10%	97.13%
56.0	17.250	1.591	1291.521	0.09%	97.25%
57.0	16.533	1.545	1293.065	0.09%	97.36%
58.0	15.903	1.500	1294.565	0.09%	97.48%
59.0	15.304	1.459	1296.024	0.08%	97.59%
60.0	14.711	1.418	1297.442	0.08%	97.69%
61.0	14.133	1.377	1298.819	0.08%	97.80%
62.0	13.636	1.338	1300.157	0.08%	97.90%
63.0	13.116	1.301	1301.458	0.08%	98.00%
64.0	12.677	1.266	1302.724	0.07%	98.09%
65.0	12.260	1.234	1303.958	0.07%	98.18%
66.0	11.865	1.204	1305.162	0.07%	98.27%
67.0	11.456	1.173	1306.334	0.07%	98.36%
68.0	11.134	1.144	1307.479	0.07%	98.45%
69.0	10.849	1.121	1308.6	0.07%	98.53%
70.0	10.673	1.105	1309.705	0.06%	98.62%
71.0	10.527	1.096	1310.801	0.06%	98.70%
72.0	10.432	1.090	1311.891	0.06%	98.78%
73.0	10.344	1.086	1312.977	0.06%	98.86%
74.0	10.256	1.083	1314.06	0.06%	98.94%
75.0	10.154	1.078	1315.139	0.06%	99.03%

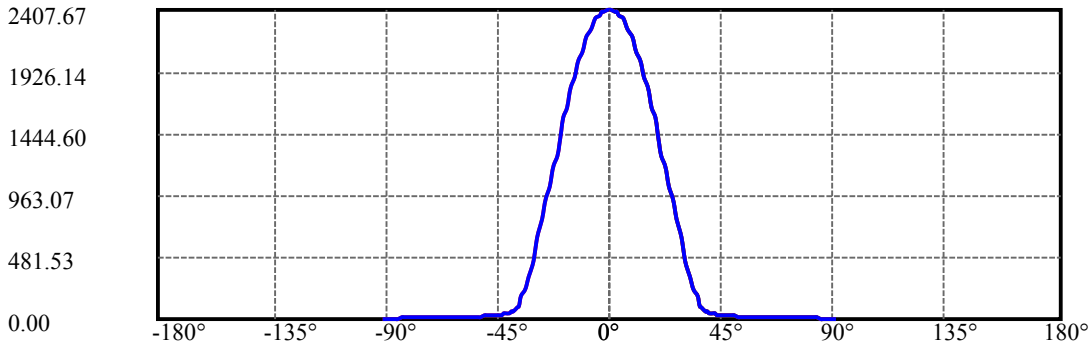
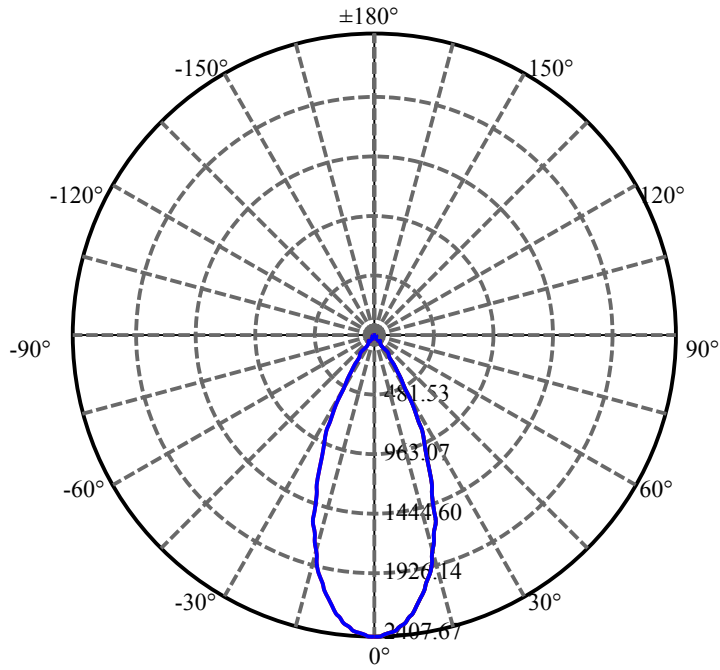
$\gamma(^{\circ})$	Average I(cd)	Zonal F(lm)	Sum F(lm)	Eff Flux(%)	Eff Sum(%)
76.0	10.015	1.071	1316.209	0.06%	99.11%
77.0	9.839	1.059	1317.268	0.06%	99.19%
78.0	9.664	1.044	1318.312	0.06%	99.26%
79.0	9.407	1.025	1319.336	0.06%	99.34%
80.0	9.115	0.999	1320.335	0.06%	99.42%
81.0	8.771	0.967	1321.302	0.06%	99.49%
82.0	8.325	0.927	1322.229	0.05%	99.56%
83.0	7.791	0.876	1323.105	0.05%	99.63%
84.0	7.228	0.818	1323.924	0.05%	99.69%
85.0	6.825	0.767	1324.691	0.04%	99.74%
86.0	6.503	0.729	1325.419	0.04%	99.80%
87.0	6.262	0.699	1326.118	0.04%	99.85%
88.0	5.991	0.671	1326.789	0.04%	99.90%
89.0	5.867	0.650	1327.439	0.04%	99.95%
90.0	5.830	0.641	1328.08	0.04%	100.00%

ZONAL LUMEN SUMMARY

Zone	Lumens	%Lamp	%Fixt
0-30	1136.05	66.13%	85.54%
0-40	1256.66	73.15%	94.62%
0-60	1297.44	75.52%	97.69%
0-90	1327.44	77.27%	99.95%
0-120	1327.44	77.27%	99.95%
0-180	1328.08	77.30%	100.00%
60-90	30.00	1.75%	2.26%
90-120	0.00	0.00%	0.00%
90-130	0.00	0.00%	0.00%
90-150	0.00	0.00%	0.00%
90-180	0.00	0.00%	0.00%
0-27.70	1062.46	61.84%	80.00%

ZONAL LUMEN SUMMARY

0-10	217.29
10-20	495.86
20-30	422.90
30-40	120.61
40-50	24.55
50-60	16.23
60-70	12.26
70-80	10.63
80-90	7.10
90-100	0.00
100-110	0.00
110-120	0.00
120-130	0.00
130-140	0.00
140-150	0.00
150-160	0.00
160-170	0.00
170-180	0.00



C0(Max): —————

C0/C180: —————

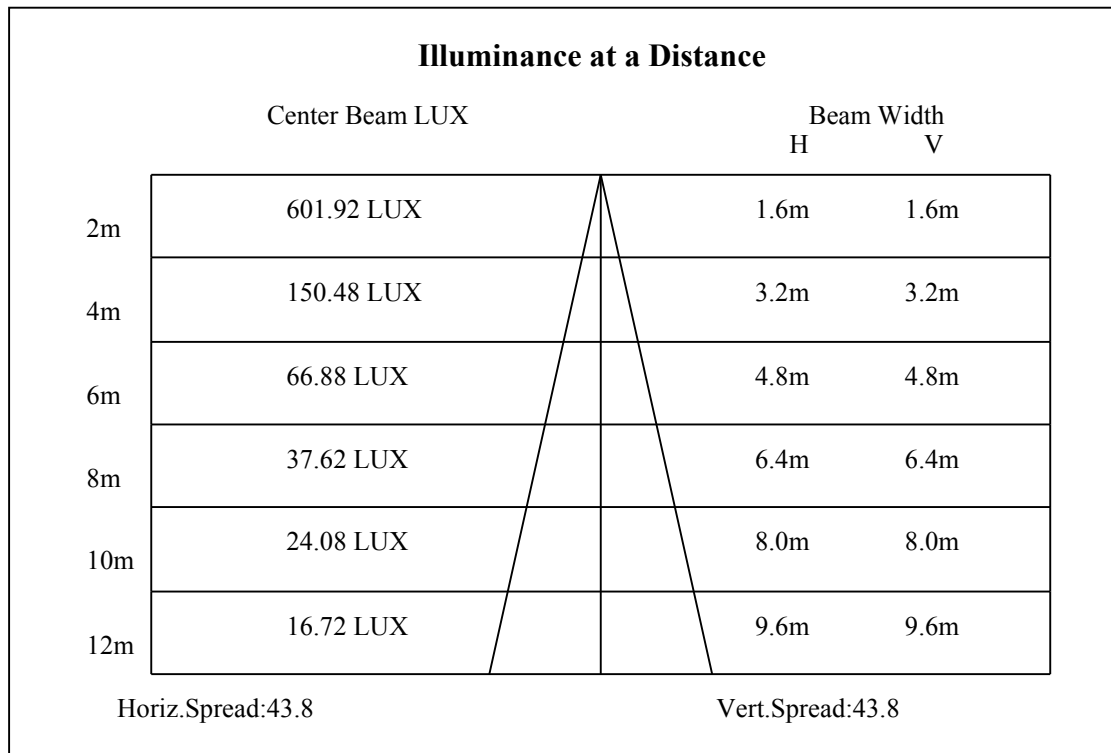
C90/C270: —————

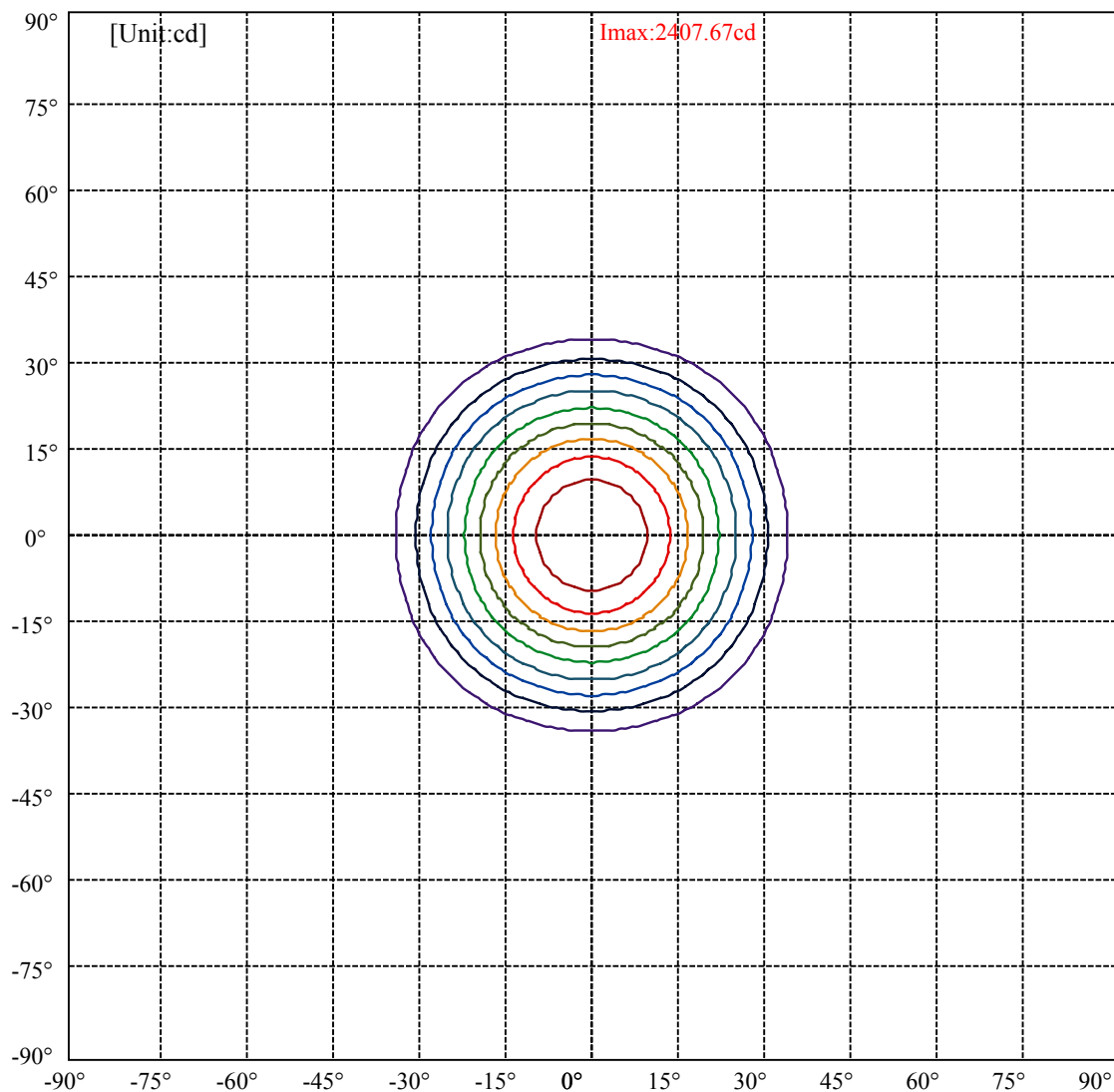
Field angle(10%Imax):C0/180Left:33.7 Right:33.7

:C90/270Left:33.7 Right:33.7

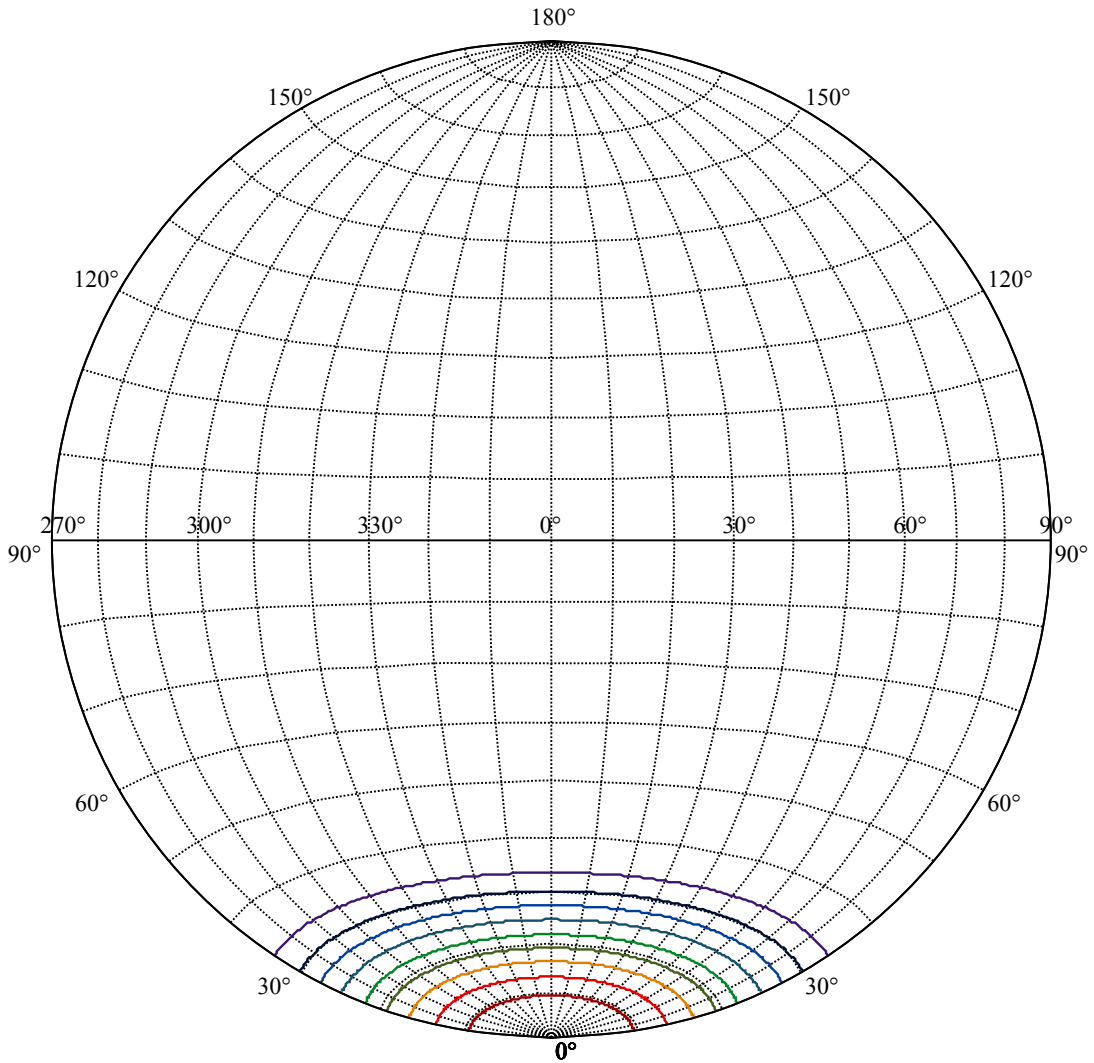
Beam Angle(50%Imax):C0/180Left:21.9 Right:21.9

:C90/270Left:21.9 Right:21.9





(10%Imax) 240.767	—
(20%Imax) 481.535	—
(30%Imax) 722.302	—
(40%Imax) 963.07	—
(50%Imax) 1203.84	—
(60%Imax) 1444.6	—
(70%Imax) 1685.37	—
(80%Imax) 1926.14	—
(90%Imax) 2166.91	—



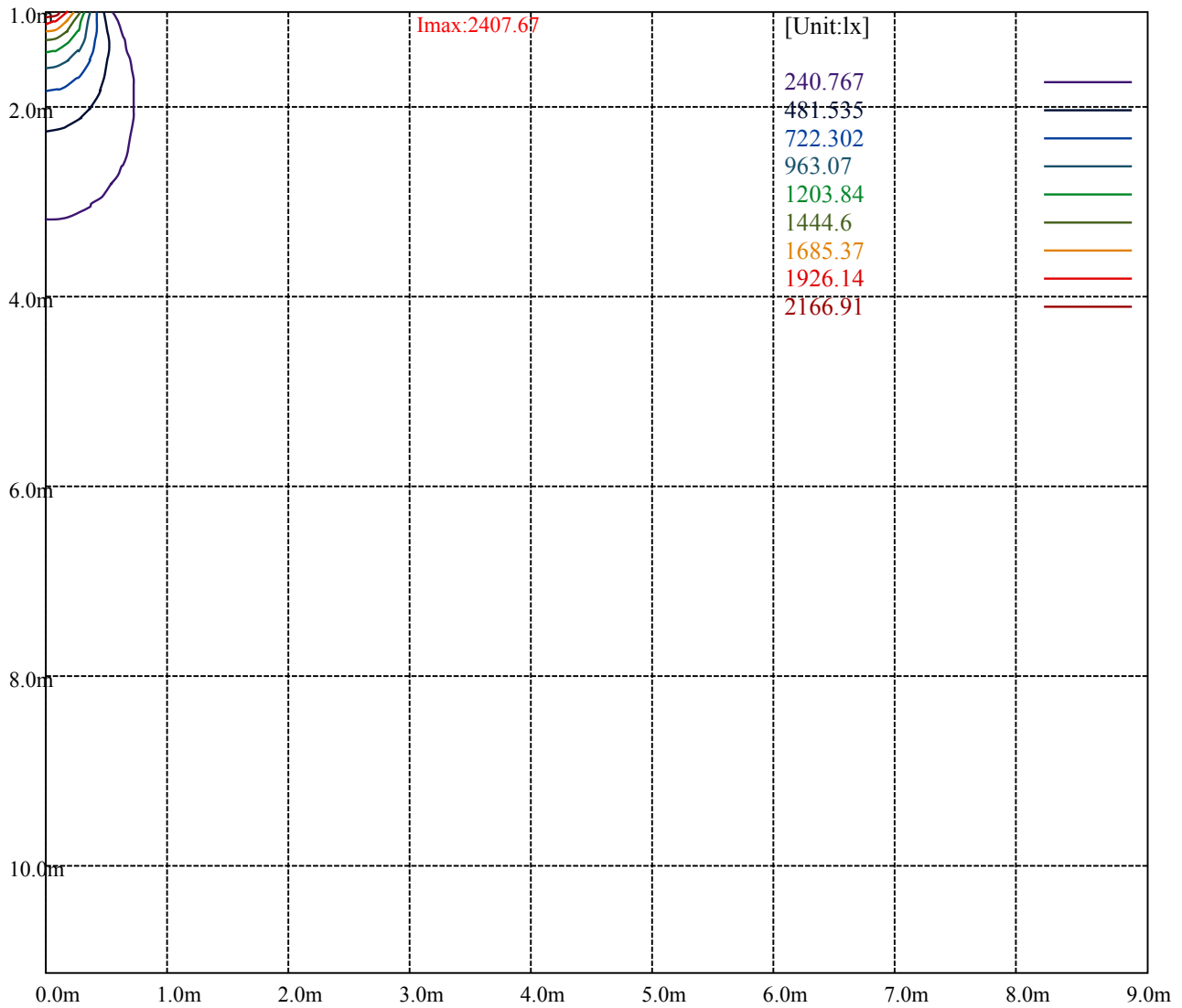
House

[Unit:cd]

Road

Imax:2407.67

(10%Imax) 240.767	—
(20%Imax) 481.535	—
(30%Imax) 722.302	—
(40%Imax) 963.07	—
(50%Imax) 1203.84	—
(60%Imax) 1444.6	—
(70%Imax) 1685.37	—
(80%Imax) 1926.14	—
(90%Imax) 2166.91	—



Luminance Table

γ	45	50	55	60	65	70	75	80	85
C0	0	0	0	0	0	0	0	0	0
C45	0	0	0	0	0	0	0	0	0
C90	0	0	0	0	0	0	0	0	0

L(Hor)(65)	L(Ver)(65)	L45(65)	L(Hor)(75)	L(Ver)(75)	L45(75)	L(Hor)(85)	L(Ver)(85)	L45(85)
0	0	0	0	0	0	0	0	0

Glare Table

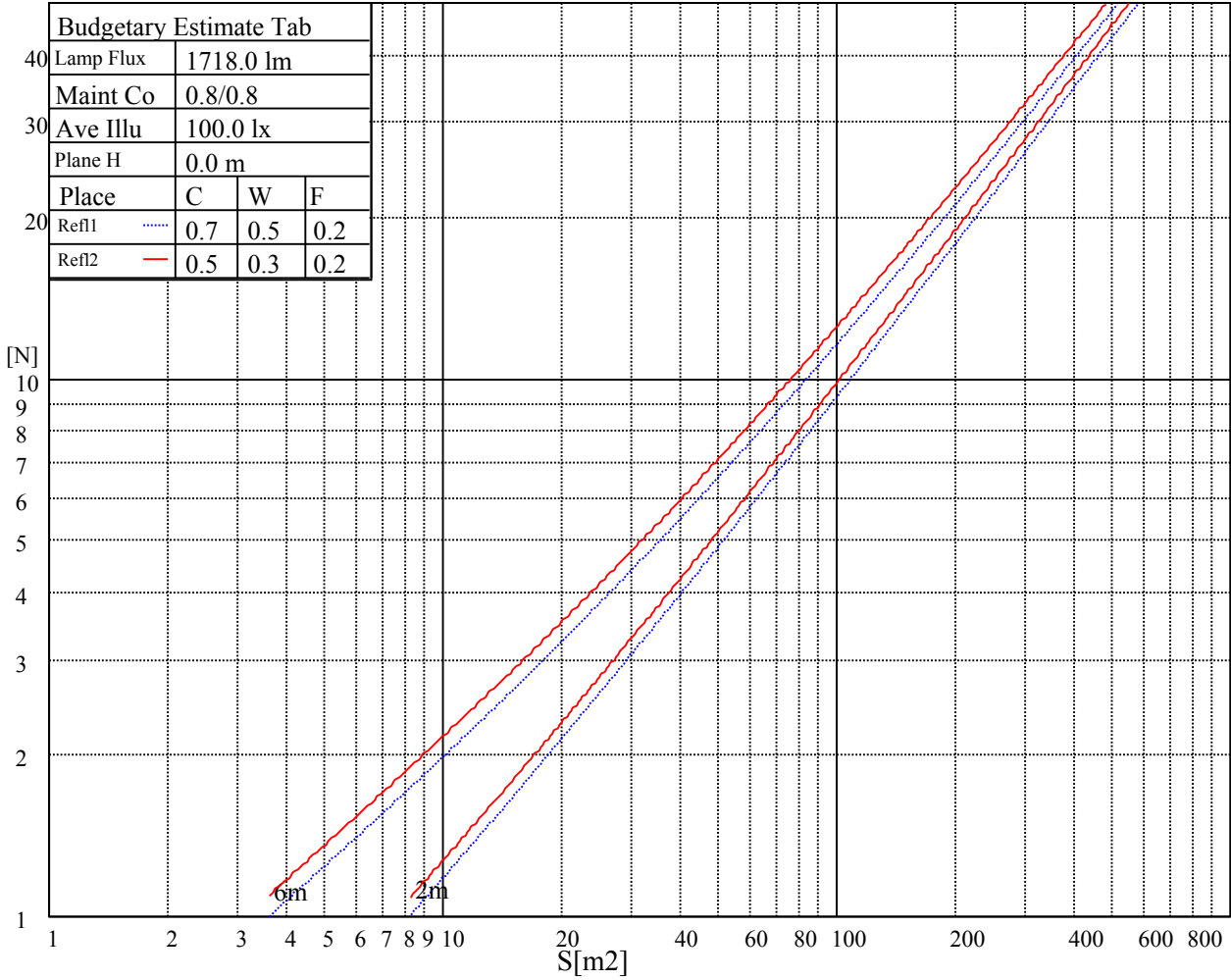
Glare	Quality	Service Values Illuminance(lx)							
1.15	A	2000	1000	500	<=300				
1.5	B		2000	1000	500	<=300			
1.85	C			2000	1000	500	<=300		
2.2	D				2000	1000	500	<=300	
2.55	E					2000	1000	500	<=300
		a	b	c	d	e	f	g	h

Luminance Limiting Curve

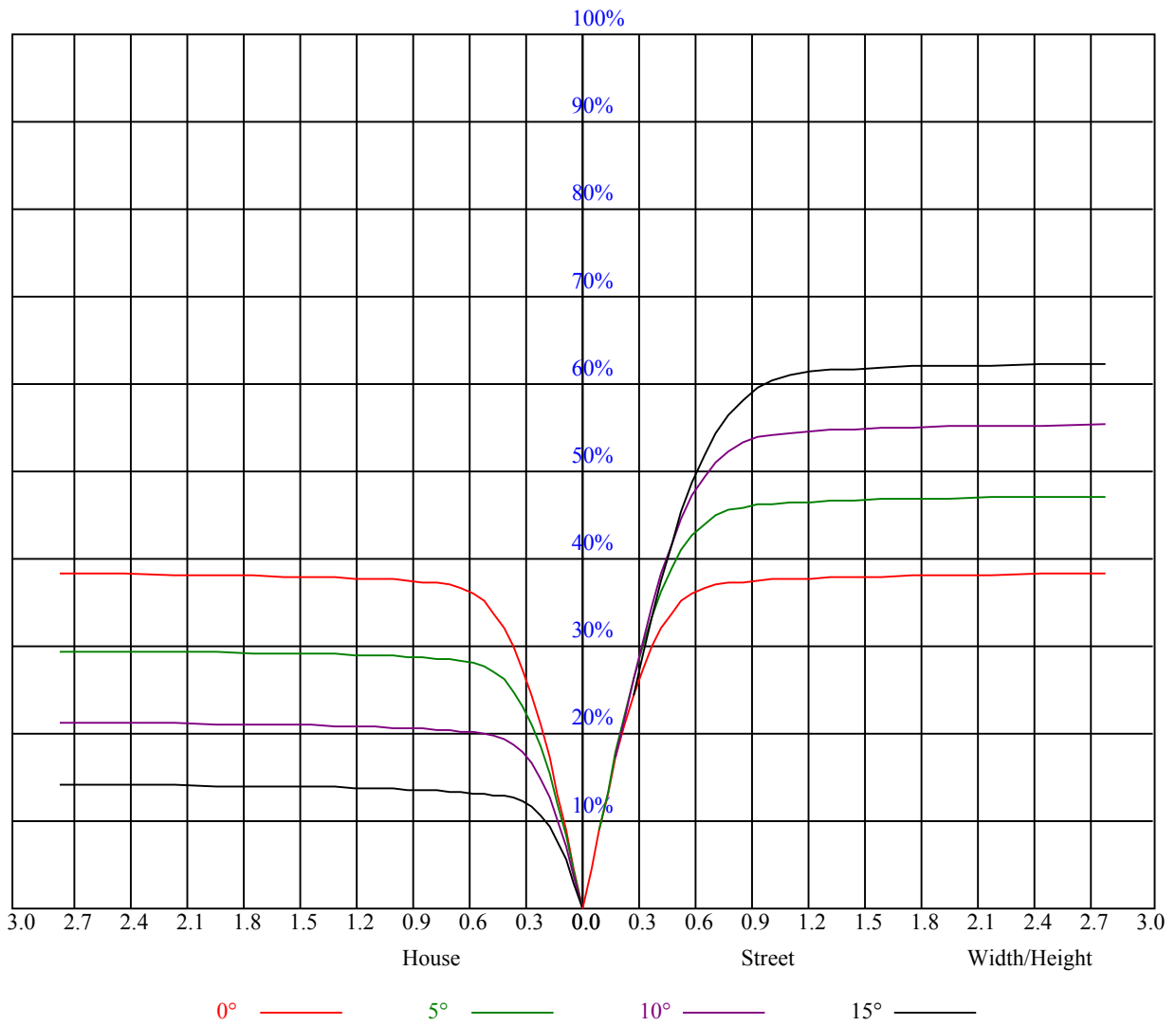


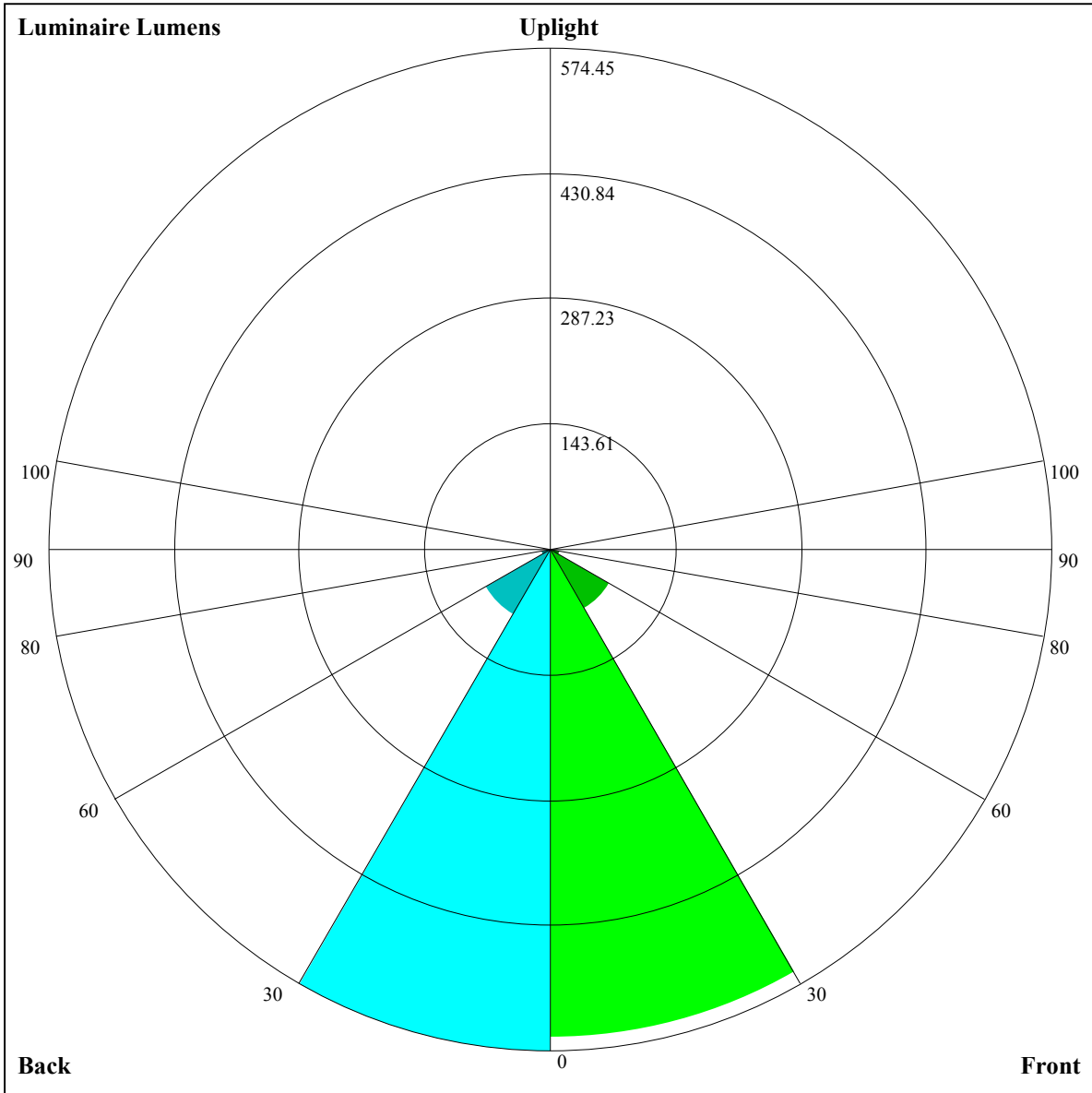
Illumination assessment according UGR											
Rf of Ceiling	70	70	50	50	30	70	70	50	50	30	
Rf of Wall	50	30	50	30	30	50	30	50	30	30	
Rf of Floor	20	20	20	20	20	20	20	20	20	20	
Room dimensions		Viewed crosswise					Viewed endwise				
X	Y										
2H	2H	非数字	非数字	非数字	非数字	非数字	非数字	非数字	非数字	非数字	
	3H	非数字	非数字	非数字	非数字	非数字	非数字	非数字	非数字	非数字	
	4H	非数字	非数字	非数字	非数字	非数字	非数字	非数字	非数字	非数字	
	6H	非数字	非数字	非数字	非数字	非数字	非数字	非数字	非数字	非数字	
	8H	非数字	非数字	非数字	非数字	非数字	非数字	非数字	非数字	非数字	
4H	12H	非数字	非数字	非数字	非数字	非数字	非数字	非数字	非数字	非数字	
	2H	非数字	非数字	非数字	非数字	非数字	非数字	非数字	非数字	非数字	
	3H	非数字	非数字	非数字	非数字	非数字	非数字	非数字	非数字	非数字	
	4H	非数字	非数字	非数字	非数字	非数字	非数字	非数字	非数字	非数字	
	6H	非数字	非数字	非数字	非数字	非数字	非数字	非数字	非数字	非数字	
8H	8H	非数字	非数字	非数字	非数字	非数字	非数字	非数字	非数字	非数字	
	12H	非数字	非数字	非数字	非数字	非数字	非数字	非数字	非数字	非数字	
	4H	非数字	非数字	非数字	非数字	非数字	非数字	非数字	非数字	非数字	
	6H	非数字	非数字	非数字	非数字	非数字	非数字	非数字	非数字	非数字	
	8H	非数字	非数字	非数字	非数字	非数字	非数字	非数字	非数字	非数字	
12H	12H	非数字	非数字	非数字	非数字	非数字	非数字	非数字	非数字	非数字	
	4H	非数字	非数字	非数字	非数字	非数字	非数字	非数字	非数字	非数字	
	6H	非数字	非数字	非数字	非数字	非数字	非数字	非数字	非数字	非数字	
8H	非数字	非数字	非数字	非数字	非数字	非数字	非数字	非数字	非数字		
Variation with the observer position at spacings:											
S = 1.0H		非数字/非数字					非数字/非数字				
S = 1.5H		非数字/非数字					非数字/非数字				
S = 2.0H		非数字/非数字					非数字/非数字				
Standard tables:		BK0					BK0				
Uncorrected UGR		负无穷大					负无穷大				

UGR calculation is based on CIE Publ. 117 ,S/H = 0.25



RHOCC	80			70			50			30			10			0
RHOW	50	30	10	50	30	10	50	30	10	50	30	10	50	30	10	0
RCR	COEFFICIENTS OF UTILIZATION RHOF=20 CU															
0	0.92	0.92	0.92	0.90	0.90	0.90	0.86	0.86	0.86	0.82	0.82	0.82	0.79	0.79	0.79	0.77
1	0.86	0.84	0.82	0.84	0.82	0.81	0.81	0.80	0.78	0.78	0.77	0.76	0.76	0.75	0.74	0.73
2	0.80	0.78	0.75	0.79	0.76	0.74	0.77	0.74	0.73	0.74	0.73	0.71	0.72	0.71	0.70	0.68
3	0.76	0.72	0.69	0.75	0.71	0.69	0.73	0.70	0.68	0.71	0.69	0.67	0.69	0.67	0.66	0.65
4	0.72	0.68	0.65	0.71	0.67	0.64	0.69	0.66	0.64	0.68	0.65	0.63	0.66	0.64	0.62	0.61
5	0.68	0.64	0.61	0.67	0.63	0.60	0.66	0.62	0.60	0.65	0.62	0.59	0.63	0.61	0.59	0.58
6	0.64	0.60	0.57	0.64	0.60	0.57	0.63	0.59	0.57	0.62	0.59	0.56	0.61	0.58	0.56	0.55
7	0.61	0.57	0.54	0.61	0.57	0.54	0.60	0.56	0.54	0.59	0.56	0.54	0.58	0.55	0.53	0.52
8	0.58	0.54	0.52	0.58	0.54	0.51	0.57	0.54	0.51	0.57	0.53	0.51	0.56	0.53	0.51	0.50
9	0.56	0.52	0.49	0.55	0.52	0.49	0.55	0.51	0.49	0.54	0.51	0.49	0.54	0.51	0.49	0.48
10	0.53	0.49	0.47	0.53	0.49	0.47	0.53	0.49	0.47	0.52	0.49	0.47	0.51	0.49	0.46	0.45





Luminaire Lumens:

FL=558.79,FM=77.9,FH=11.47,FVH=3.83

BL=574.45,BM=85.73,BH=11.37,BVH=3.92

UL=0,UH=0

BUG Rating:B2-U0-G0

Intensity data(cd)

C/γ(°)	0.0	1.0	2.0	3.0	4.0	5.0	6.0	7.0	8.0
0.0	2406.50	2402.99	2392.46	2377.24	2353.83	2325.74	2298.24	2264.29	2211.62
45.0	2408.84	2410.60	2410.02	2402.41	2389.53	2370.22	2349.15	2314.62	2282.44
90.0	2409.43	2408.26	2400.65	2390.12	2370.80	2349.74	2322.82	2294.73	2249.66
135.0	2405.92	2410.60	2410.02	2405.92	2391.87	2369.05	2347.40	2321.65	2283.61
180.0	2406.50	2409.43	2407.09	2398.31	2383.09	2362.61	2331.59	2302.92	2267.81
225.0	2408.84	2401.82	2387.78	2369.63	2346.23	2319.89	2288.87	2240.89	2198.16
270.0	2409.43	2405.33	2397.14	2386.61	2370.80	2343.30	2311.70	2266.63	2230.94
315.0	2405.92	2397.14	2383.09	2362.03	2336.28	2308.77	2266.63	2225.67	2178.85
360.0	2406.50	2402.99	2392.46	2377.24	2353.83	2325.74	2298.24	2264.29	2211.62
C/γ(°)	9.0	10.0	11.0	12.0	13.0	14.0	15.0	16.0	17.0
0.0	2165.39	2109.79	2036.06	1970.51	1902.04	1818.35	1749.30	1676.73	1583.68
45.0	2244.98	2204.02	2154.86	2090.48	2029.03	1968.17	1881.56	1810.16	1738.18
90.0	2208.11	2153.10	2099.85	2043.66	1965.83	1903.21	1833.57	1759.83	1669.12
135.0	2247.32	2208.70	2162.46	2099.26	2044.83	1985.73	1923.11	1838.25	1769.19
180.0	2231.52	2177.10	2129.69	2075.27	2017.91	1940.08	1872.19	1803.72	1715.35
225.0	2147.25	2095.75	2019.67	1956.47	1888.58	1800.21	1731.15	1635.18	1556.76
270.0	2184.70	2120.91	2064.73	2000.36	1935.98	1848.20	1776.80	1705.40	1629.32
315.0	2125.60	2054.78	1991.58	1910.23	1841.76	1772.71	1682.00	1607.67	1528.67
360.0	2165.39	2109.79	2036.06	1970.51	1902.04	1818.35	1749.30	1676.73	1583.68
C/γ(°)	18.0	19.0	20.0	21.0	22.0	23.0	24.0	25.0	26.0
0.0	1503.50	1422.16	1271.75	1159.04	1138.56	1058.09	976.92	876.61	791.69
45.0	1645.13	1570.80	1474.83	1392.89	1313.30	1227.86	1121.93	1041.17	956.32
90.0	1593.63	1516.38	1437.37	1270.00	1158.69	1158.69	1077.87	977.79	896.16
135.0	1700.72	1610.60	1533.93	1430.35	1344.91	1253.61	1154.12	1075.12	994.94
180.0	1636.35	1559.68	1454.93	1371.83	1260.05	1172.26	1092.67	1014.25	913.59
225.0	1478.34	1371.83	1151.96	1151.96	1112.75	1017.53	939.75	859.34	779.29
270.0	1533.93	1451.42	1367.73	1257.71	1172.26	1064.58	994.36	913.01	808.84
315.0	1427.42	1278.78	1163.84	1163.84	1064.93	987.80	908.21	827.63	744.23
360.0	1503.50	1422.16	1271.75	1159.04	1138.56	1058.09	976.92	876.61	791.69
C/γ(°)	27.0	28.0	29.0	30.0	31.0	32.0	33.0	34.0	35.0
0.0	706.37	618.99	516.64	435.52	342.94	273.53	211.44	146.36	108.33
45.0	870.29	760.27	673.07	589.38	505.69	403.86	330.13	295.01	295.01
90.0	810.07	700.46	615.54	509.20	429.38	352.77	282.72	204.95	152.80
135.0	908.33	799.48	713.45	628.59	544.90	443.66	367.58	297.94	297.94
180.0	833.42	749.73	670.14	559.53	477.60	399.18	326.03	309.06	230.70
225.0	676.17	593.54	509.97	429.96	335.74	267.21	192.66	144.26	105.81
270.0	726.91	644.98	567.14	464.14	384.55	315.49	297.94	297.94	126.17
315.0	643.34	559.42	477.89	379.46	305.02	224.20	168.02	123.01	84.45
360.0	706.37	618.99	516.64	435.52	342.94	273.53	211.44	146.36	108.33
C/γ(°)	36.0	37.0	38.0	39.0	40.0	41.0	42.0	43.0	44.0
0.0	83.16	65.08	56.06	49.22	43.95	38.98	35.87	33.30	31.13
45.0	145.02	103.06	81.35	67.59	56.42	49.92	44.65	40.67	36.58
90.0	114.12	88.66	70.40	60.80	53.37	46.12	41.73	38.22	34.59
135.0	162.17	120.44	86.26	70.99	61.27	51.50	45.76	41.20	37.63
180.0	125.76	95.04	75.44	61.62	53.37	46.58	41.55	36.75	33.77
225.0	76.61	63.15	54.66	47.52	40.91	37.10	34.06	31.60	29.09
270.0	93.34	71.10	57.47	50.33	42.96	38.45	35.46	32.19	30.02
315.0	67.48	57.70	50.45	43.37	39.15	35.93	33.36	30.67	28.85
360.0	83.16	65.08	56.06	49.22	43.95	38.98	35.87	33.30	31.13

Intensity data(cd)

C/γ(°)	45.0	46.0	47.0	48.0	49.0	50.0	51.0	52.0	53.0
0.0	28.73	27.15	25.40	24.11	23.06	21.77	20.83	20.01	19.25
45.0	33.88	31.66	29.67	27.92	25.98	24.64	23.12	22.06	20.83
90.0	32.19	30.02	27.80	26.22	24.81	23.29	22.18	21.19	20.25
135.0	34.00	31.60	29.55	27.74	25.75	24.35	23.17	21.83	20.83
180.0	31.37	29.32	27.21	25.69	24.40	23.00	21.95	20.95	19.84
225.0	27.33	25.87	24.23	23.06	21.71	20.78	19.90	18.90	18.14
270.0	28.21	26.63	24.87	23.58	22.47	21.48	20.31	19.49	18.73
315.0	27.21	25.52	24.23	23.06	21.83	20.89	20.07	19.08	18.38
360.0	28.73	27.15	25.40	24.11	23.06	21.77	20.83	20.01	19.25
C/γ(°)	54.0	55.0	56.0	57.0	58.0	59.0	60.0	61.0	62.0
0.0	18.38	17.67	17.03	16.39	15.63	15.10	14.51	13.93	13.46
45.0	19.96	19.20	18.43	17.62	16.91	16.27	15.63	14.98	14.46
90.0	19.20	18.43	17.73	17.09	16.33	15.74	15.04	14.46	13.99
135.0	19.96	18.96	18.26	17.38	16.74	16.15	15.51	14.86	14.34
180.0	19.02	18.32	17.44	16.74	16.21	15.51	14.92	14.40	13.93
225.0	17.50	16.85	16.27	15.51	14.98	14.46	13.93	13.28	12.82
270.0	17.85	17.21	16.56	15.86	15.27	14.57	14.10	13.58	13.11
315.0	17.67	17.03	16.27	15.68	15.16	14.63	14.05	13.58	12.99
360.0	18.38	17.67	17.03	16.39	15.63	15.10	14.51	13.93	13.46
C/γ(°)	63.0	64.0	65.0	66.0	67.0	68.0	69.0	70.0	71.0
0.0	13.05	12.52	12.17	11.88	11.47	11.24	11.06	10.94	10.83
45.0	13.93	13.52	12.99	12.58	12.11	11.76	11.41	11.12	10.94
90.0	13.40	12.93	12.52	12.11	11.59	11.24	10.94	10.71	10.53
135.0	13.93	13.46	13.05	12.58	12.17	11.82	11.35	11.12	10.83
180.0	13.34	12.87	12.47	12.06	11.53	11.18	10.83	10.59	10.48
225.0	12.23	11.88	11.47	11.00	10.71	10.42	10.18	10.12	10.01
270.0	12.52	12.11	11.70	11.35	11.00	10.59	10.36	10.18	10.07
315.0	12.52	12.11	11.70	11.35	11.06	10.83	10.65	10.59	10.53
360.0	13.05	12.52	12.17	11.88	11.47	11.24	11.06	10.94	10.83
C/γ(°)	72.0	73.0	74.0	75.0	76.0	77.0	78.0	79.0	80.0
0.0	10.71	10.65	10.53	10.42	10.24	10.01	9.83	9.54	9.13
45.0	10.83	10.71	10.65	10.53	10.42	10.24	10.07	9.89	9.71
90.0	10.42	10.30	10.24	10.18	10.07	9.89	9.77	9.54	9.25
135.0	10.71	10.59	10.48	10.42	10.36	10.24	10.12	9.95	9.71
180.0	10.36	10.24	10.18	10.07	9.89	9.77	9.60	9.42	9.13
225.0	9.95	9.89	9.77	9.66	9.54	9.31	9.07	8.72	8.49
270.0	10.01	9.95	9.89	9.77	9.60	9.48	9.31	9.07	8.78
315.0	10.48	10.42	10.30	10.18	10.01	9.77	9.54	9.13	8.72
360.0	10.71	10.65	10.53	10.42	10.24	10.01	9.83	9.54	9.13
C/γ(°)	81.0	82.0	83.0	84.0	85.0	86.0	87.0	88.0	89.0
0.0	8.66	8.08	7.49	6.79	6.50	6.32	6.09	5.91	5.79
45.0	9.36	9.01	8.31	7.61	6.96	6.50	6.32	6.09	5.91
90.0	9.01	8.60	7.96	7.37	6.85	6.50	6.32	6.03	5.85
135.0	9.42	8.95	8.66	8.13	7.49	7.02	6.67	6.32	6.03
180.0	8.84	8.49	8.25	7.67	7.37	6.96	6.67	6.09	5.91
225.0	8.25	7.84	7.32	6.91	6.55	6.26	6.03	5.85	5.85
270.0	8.49	8.02	7.43	6.85	6.55	6.38	6.03	5.85	5.79
315.0	8.13	7.61	6.91	6.50	6.32	6.09	5.97	5.79	5.79
360.0	8.66	8.08	7.49	6.79	6.50	6.32	6.09	5.91	5.79

Intensity data(cd)

C/ γ (°)	90.0
0.0	5.85
45.0	5.79
90.0	5.79
135.0	5.85
180.0	5.79
225.0	5.85
270.0	5.85
315.0	5.85
360.0	5.85